



Makers of
EXCENEL^{RTU}
Sterile Suspension
IT ACTS ON THE ANIMAL - NOT ON THE MILK

Practical guide to avoiding milk antibiotic residues

Tylan 200

The Dairy Antibiotic from Elanco

General Guidelines

Notes

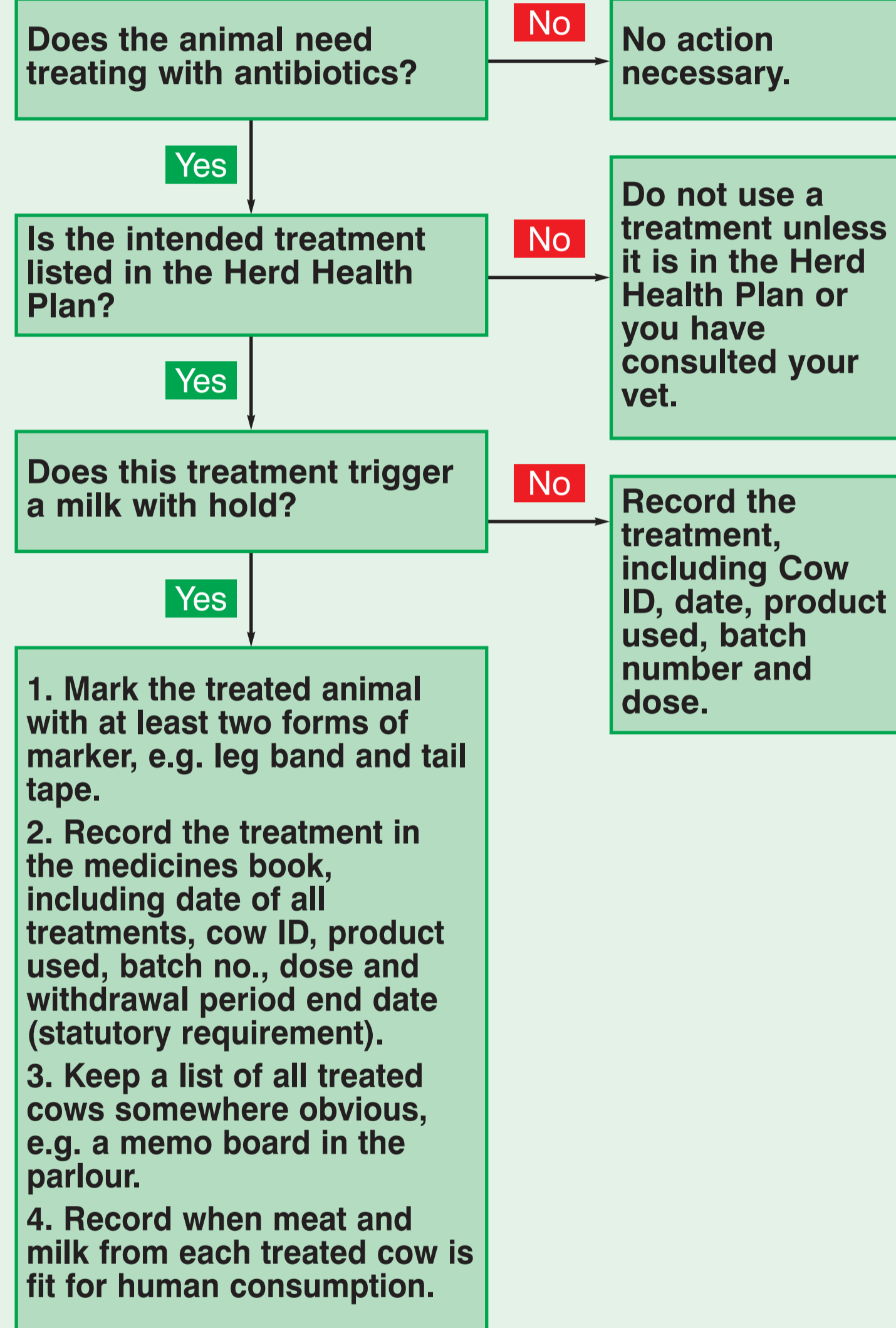
Guidelines for diagnosis and treatment of cows should be outlined in the Herd Health Plan.

The use of nil-milk withhold antibiotics, where appropriate and in accordance with veterinary advice, will reduce the risk of antibiotic residue failures.

Treatment protocols for common farm diseases should be listed in the Herd Health Plan. Treatments not listed in the plan should not be used.

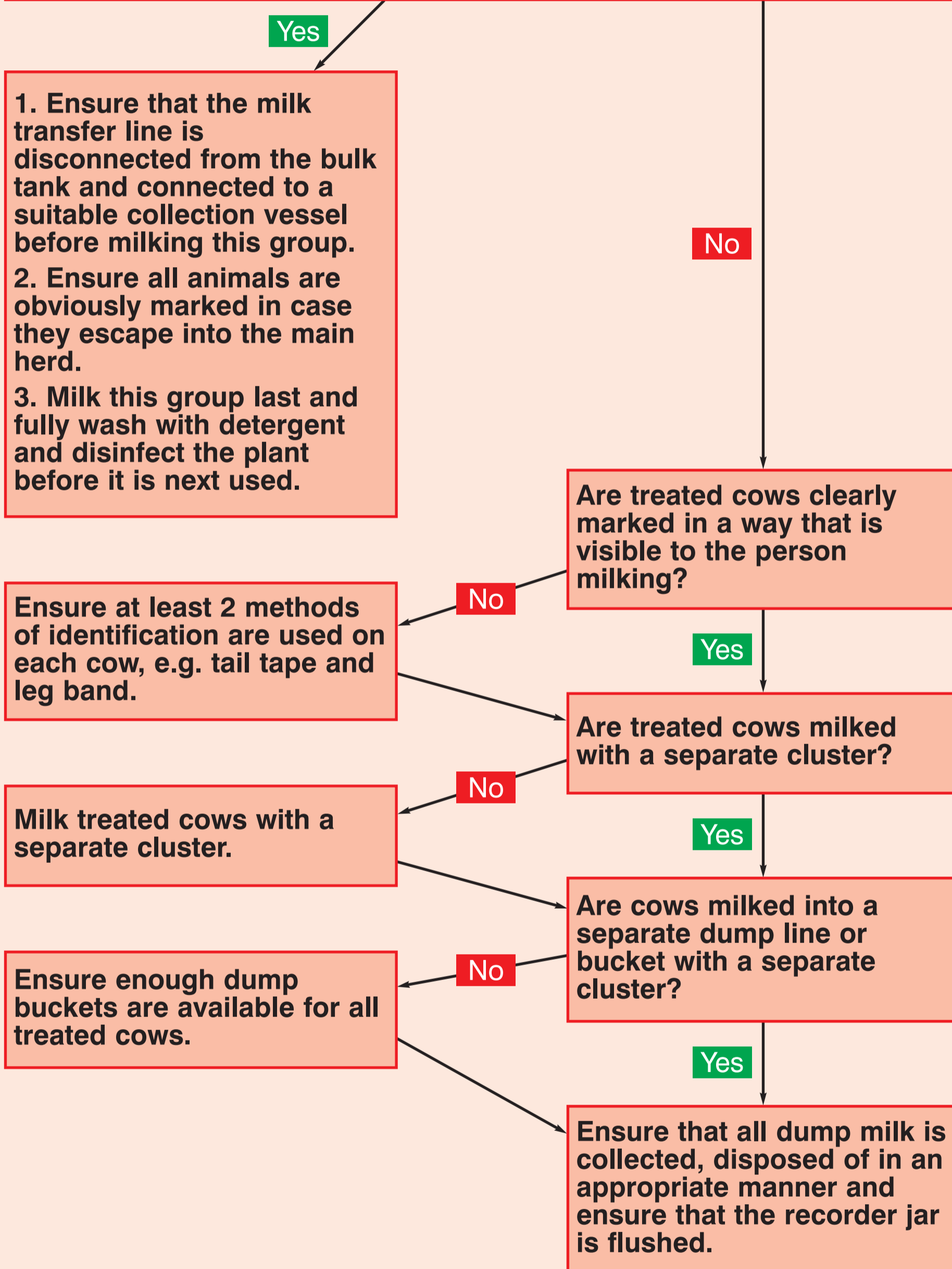
Ensure that antibiotics are obtained from a legal source to ensure that the regulatory authorities have approved withholding times. If an antibiotic residue contamination is suspected, refer to your milk purchaser's procedures. In the event of an unexplained antibiotic failure consult your vet who can fill in the BCVA inhibitory substances failure form or the VMD "Suspected Residue of Antibiotic in Milk" form to help identify the cause of the failure. The form can be obtained from: <http://www.vmd.gov.uk/General/Adverse/mla2.pdf>

Actions

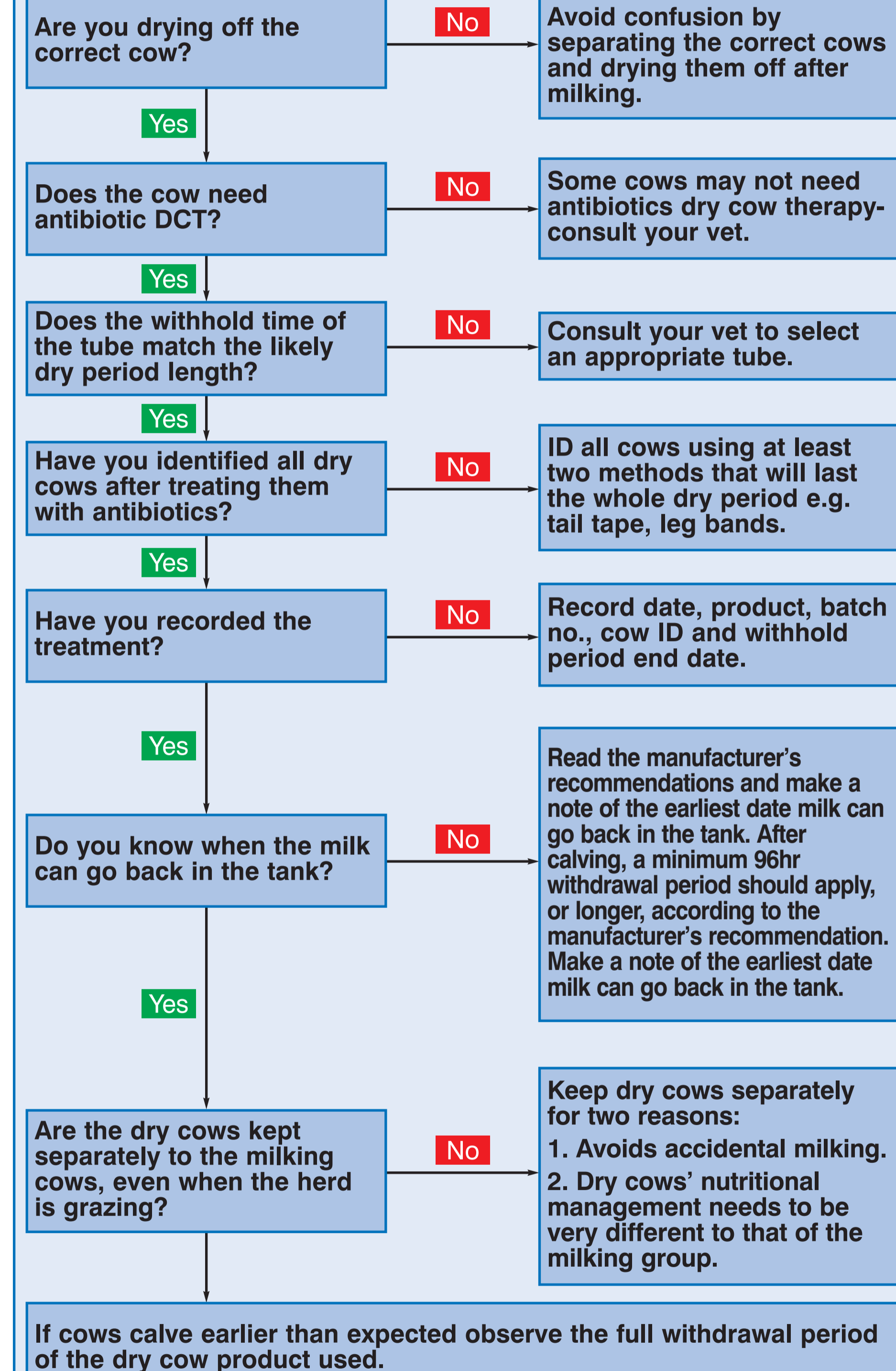


Avoiding accidental contamination during the milking routine

Are treated cows and those under a milk withhold milked separately in a 'dump' group at the end of milking?



Procedures Specific to Dry Cows



Supported by

Unless advised by your Veterinary Surgeon follow the manufacturer's instructions for the correct number of treatments, between treatments and withholding time. If in doubt, consult your Veterinary Surgeon, who may recommend the use of an antibiotic residue test.

You must ensure milk is clear of antibiotics and this is part of your milk contract.

Follow data sheet and vet advice on all treatments. If you vary treatment (combinations of products, or vary dose, frequency or prolong treatment) this can affect withdrawal times. A minimum seven day milk withdrawal must be applied and the milk tested before being put in the tank.

